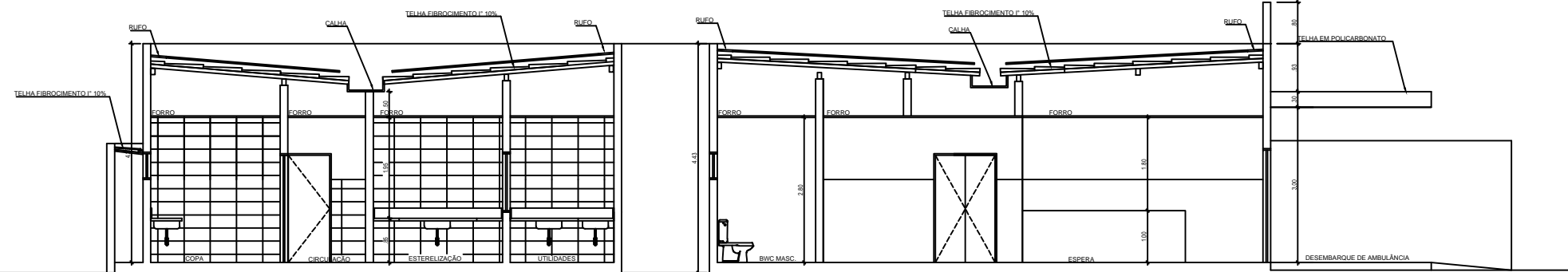
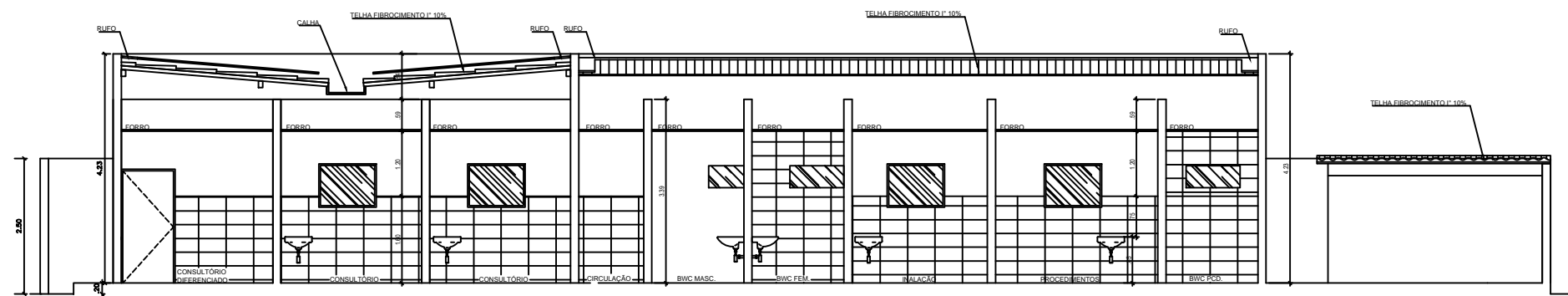


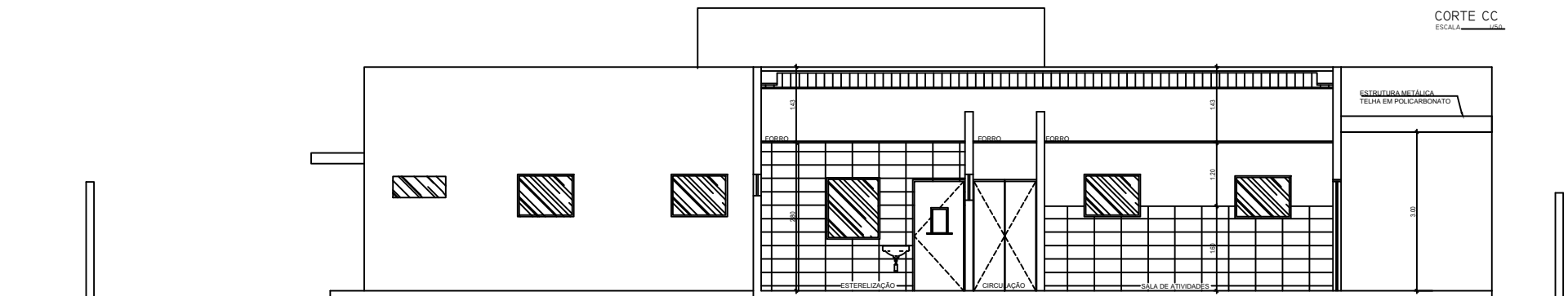
CORTE AA'
ESCALA 1/500



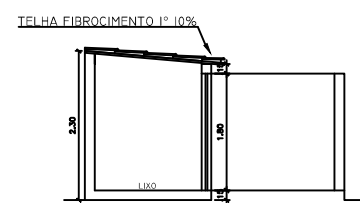
CORTE BB'
ESCALA 1/500



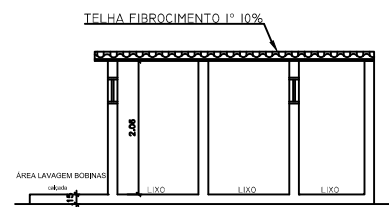
CORTE CC
ESCALA 1/500



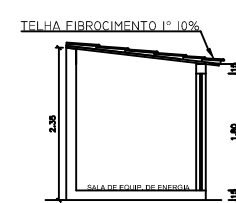
CORTE DD'
ESCALA 1/500



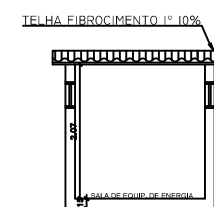
CORTE EE
ESCALA 1/500



CORTE FF
ESCALA 1/500



CORTE HH
ESCALA 1/500



CORTE GG
ESCALA 1/500

AUTORES DO PROJETO:

CARLA KATRYNE SILVA
ENGENHEIRA CIVIL
CREA 181614920-9

PROPRIETÁRIO:

PREFEITURA MUNICIPAL DE CAMPESTRE
CNPJ - 01.631.604/0001-07

REVISÃO	DESCRIPTIVO	DATA	RESPONSÁVEL
05			
02			
01			



CARLA KATRYNE
Engenheira Civil
CREA 181614920-9

EMPREENDIMENTO:

CONSTRUÇÃO DE UMA UNIDADE BÁSICA DE SAÚDE - UBS

ENDEREÇO:

CLOVIS DE ANDRADE

PROJETO:

CARLA KATRYNE

PROJETISTAS:

CARLA KATRYNE

RESPONSÁVEL TÉCNICO:

CARLA KATRYNE

DATA
06/10/2008

ESCALA
1/1000

ÁREAS DE CONSTRUÇÃO

DESENHO

CORTES

CÓDIGO

PLA ARQ

005/006-010

REVISÃO